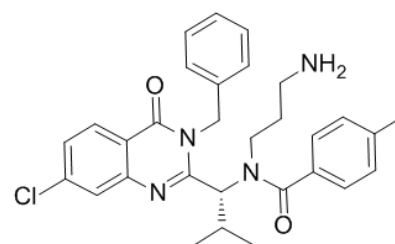


Product Name : Ispinesib
Cat. No. : PC-45861
CAS No. : 336113-53-2
Molecular Formula : C₃₀H₃₃ClN₄O₂
Molecular Weight : 517.0616
Target : Kinesin
Solubility : 10 mM in DMSO



Biological Activity

Ispinesib (SB-715992) is a potent, selective, cell-permeable, allosteric inhibitor of **Eg5 (mitotic kinesin KSP)** with K_i of 2.3 nM.

Ispinesib (SB-715992) displays >10,000-fold selectivity for Eg5 over a range of other mitotic kinesins.

Ispinesib (SB-715992) induces a monopolar spindle phenotype, leading to the activation of a spindle assembly checkpoint, mitotic arrest, and subsequent cell death with GI50 of 20-80 nM in colon, pancreas, prostate, and lung cancer cells.

Ispinesib (SB-715992) demonstrates tumor regression of breast cancer cell xenografts in mice at 10 mg/kg.

References

Good JA, et al. *J Med Chem.* 2013 Mar 14;56(5):1878-93.

Purcell JW, et al. *Clin Cancer Res.* 2010 Jan 15;16(2):566-76.

Luo L, et al. *Nat Chem Biol.* 2007 Nov;3(11):722-6. Epub 2007 Oct 7.

Caution: Product has not been fully validated for medical applications. Lab Use Only!

E-mail: tech@probechem.com